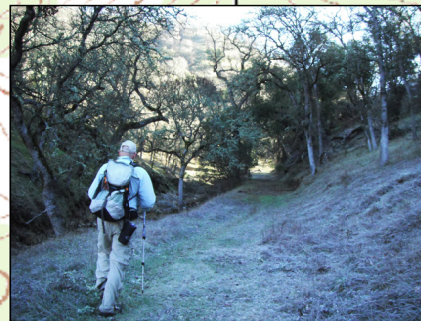


Mile marker 20.00 marks the trailhead on Knoxville Road
Cross over wire fence east of the road to start the trail.

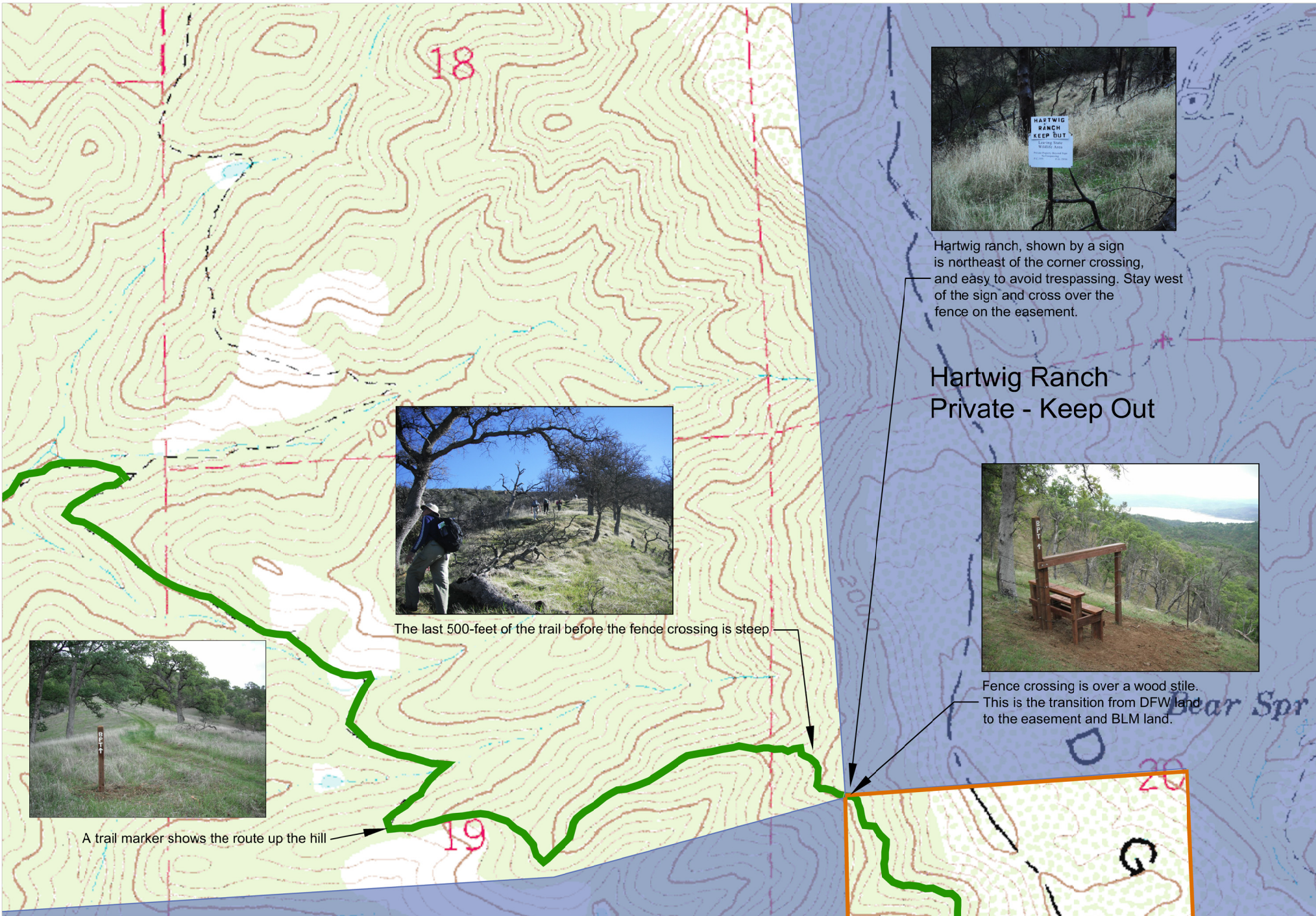


1.6 miles from the trailhead,
make a sharp turn at road intersection.
Look for a trail marker



Trail follows the creek, up the canyon,
until an intersection with an old
ranch grade that heads south.





Hartwig ranch, shown by a sign is northeast of the corner crossing, and easy to avoid trespassing. Stay west of the sign and cross over the fence on the easement.

Hartwig Ranch
Private - Keep Out



Fence crossing is over a wood stile.
This is the transition from DFW land to the easement and BLM land.

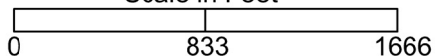
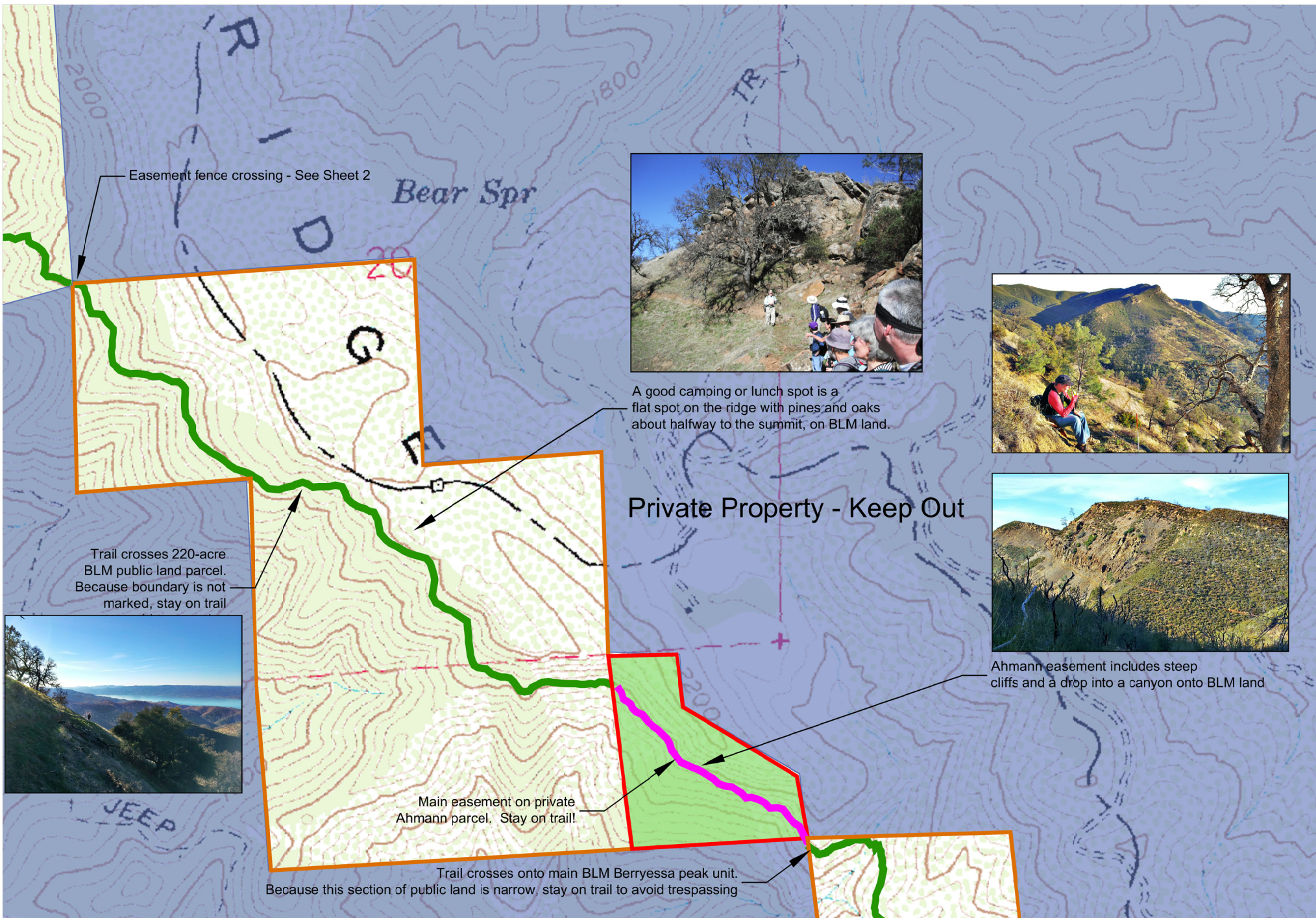


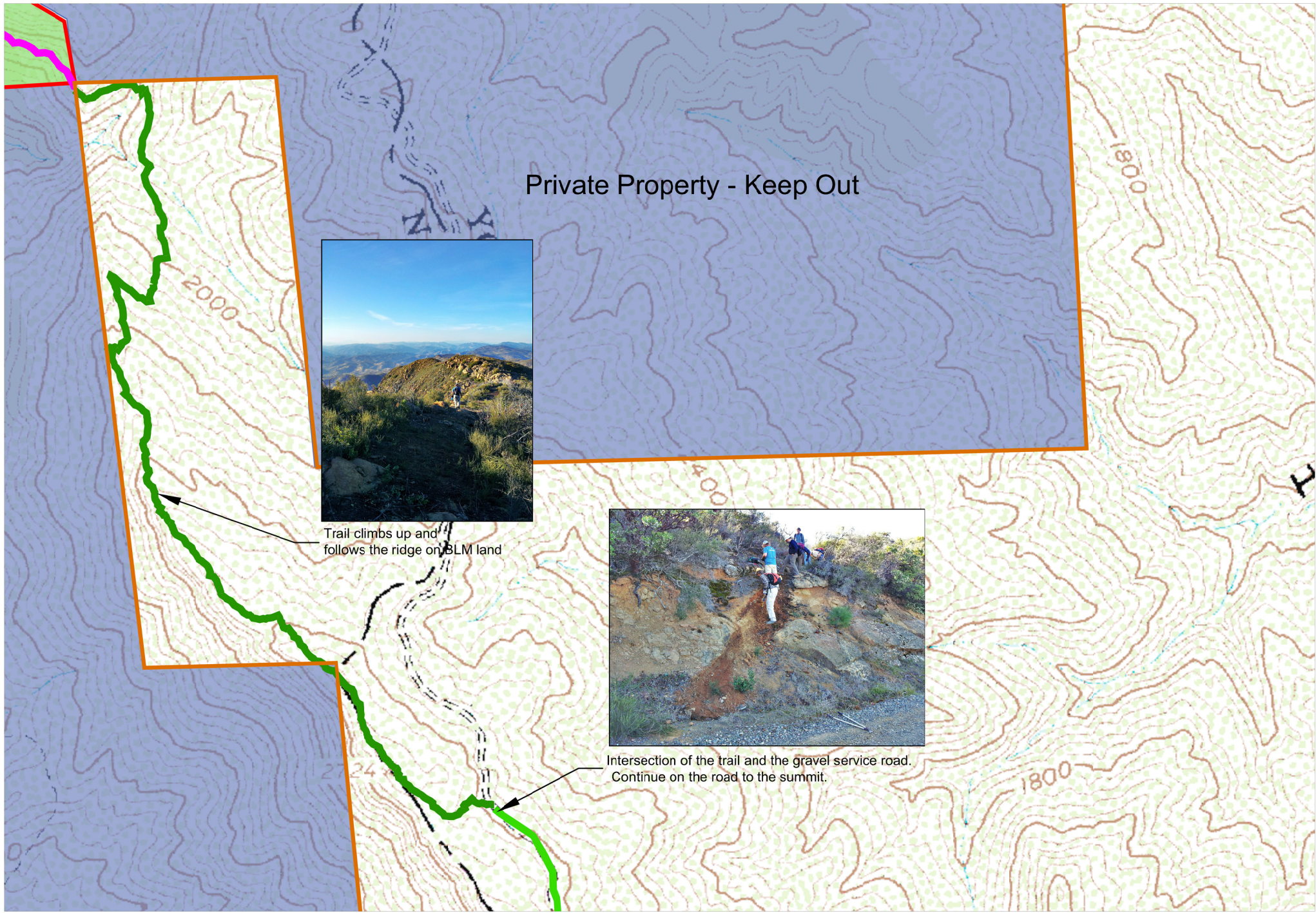
The last 500-feet of the trail before the fence crossing is steep



A trail marker shows the route up the hill







Private Property - Keep Out



Trail climbs up and follows the ridge on BLM land



Intersection of the trail and the gravel service road. Continue on the road to the summit.



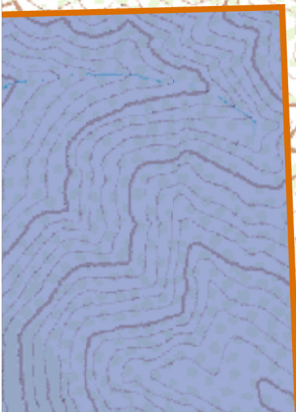
Intersection of the trail and the gravel service road.
Continue on the road to the summit. See Sheet 4.



Walking the road to the summit,
the towers will come into view.



Berryessa Peak



Lookout
3057
Berryessa Peak
Relay Sta

